



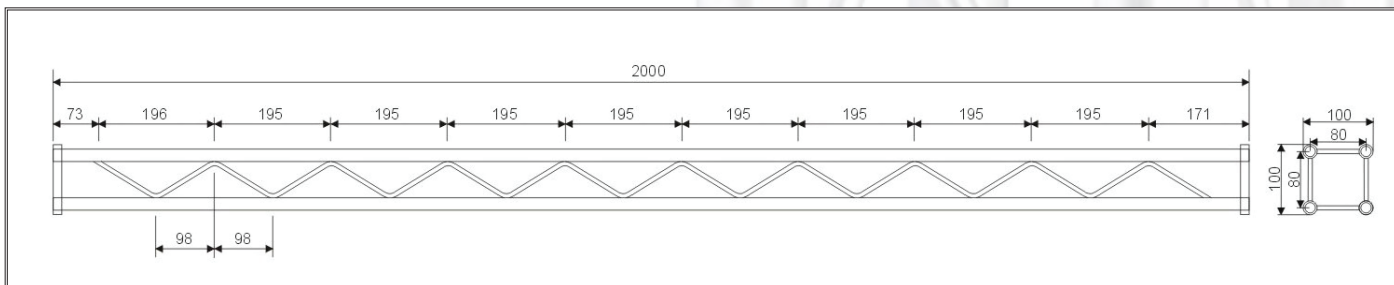
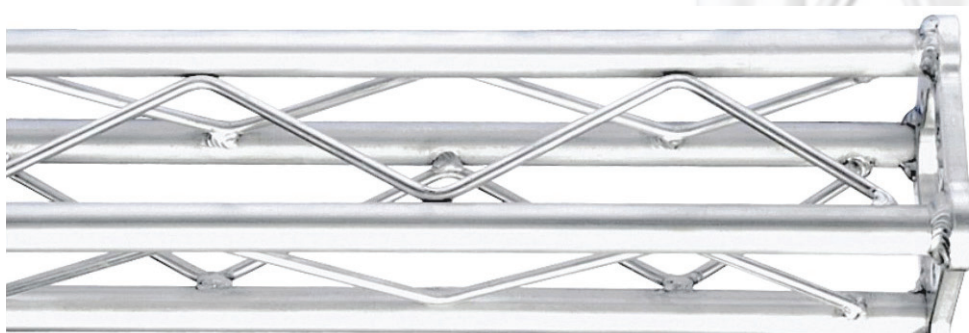
MT-100

DATI TECNICI:

Tubo principale: 20x2 mm

Diagonali: 10x2 mm

Alluminio: T6061



| MODEL | DESCRIPTION | DIMENSIONS | DIAMETER/THICKNESS | LENGTH |
|--------|-------------|-------------|--------------------|--------|
| MT-100 | MINI TRUSS | 100 x 100MM | 20 x 2MM | 500MM |
| MT-100 | MINI TRUSS | 100 x 100MM | 20 x 2MM | 1000MM |
| MT-100 | MINI TRUSS | 100 x 100MM | 20 x 2MM | 1500MM |
| MT-100 | MINI TRUSS | 100 x 100MM | 20 x 2MM | 2000MM |
| MT-100 | MINI TRUSS | 100 x 100MM | 20 x 2MM | 2500MM |
| MT-100 | MINI TRUSS | 100 x 100MM | 20 x 2MM | 3000MM |

| | 2M | 3M | 4M | 5M | 6M | 7M | 8M | 9M | 10M | 11M | 12M |
|-----------------------|-------|-------|-------|-------|-------|-------|-------|-------|-------|-------|------|
| CENTRE POINT LOAD(KG) | 408 | 302.2 | 229.6 | 208.8 | 173.8 | 142.8 | 121.2 | 100.8 | 85.6 | 76.6 | 70.8 |
| DEFLECTION(MM) | 5 | 10 | 18 | 32 | 46 | 60 | 76 | 90 | 105 | 125 | 146 |
| SYMMETRICAL LOAD(KG) | 472.6 | 373.4 | 275.6 | 221.8 | 186.6 | 165.4 | 145 | 129.6 | 113.4 | 100.4 | 88.2 |
| DEFLECTION(MM) | 4 | 8 | 14 | 22 | 32 | 45 | 59 | 75 | 90 | 106 | 121 |