



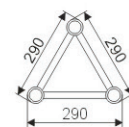
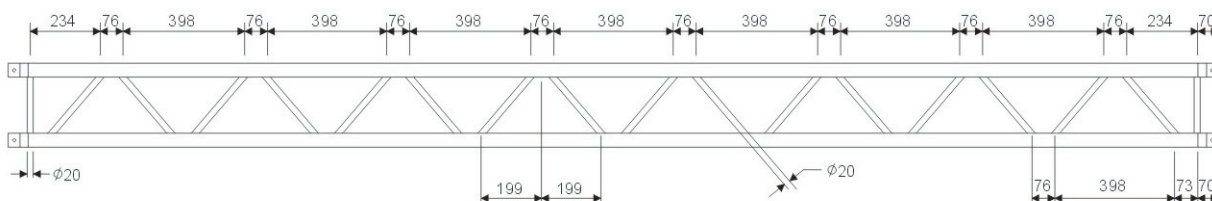
# ETT-290

**DATI TECNICI:**

Tubo principale: 50x2 mm

Diagonali: 20x2 mm

Alluminio: T6061



MODEL	DESCRIPTION	DIMENSIONS	DIAMETER/THICKNESS	LENGTH
ETT-290-2	TRIANGLE TRUSS	290 x 290MM	50 x 2MM	500MM
ETT-290-2	TRIANGLE TRUSS	290 x 290MM	50 x 2MM	1000MM
ETT-290-2	TRIANGLE TRUSS	290 x 290MM	50 x 2MM	1500MM
ETT-290-2	TRIANGLE TRUSS	290 x 290MM	50 x 2MM	2000MM
ETT-290-2	TRIANGLE TRUSS	290 x 290MM	50 x 2MM	2500MM
ETT-290-2	TRIANGLE TRUSS	290 x 290MM	50 x 2MM	3000MM

	2M	3M	4M	5M	6M	7M	8M	9M	10M	11M	12M	13M
<b>CENTRE POINT LOAD(KG)</b>	968.4	696.3	489.2	433.2	348.5	292.4	228.1	169.5	165	135.8	114.9	102.6
<b>DEFLECTION(MM)</b>	3	10	15	23	32	41	51	62	73	82	93	102
<b>SYMMETRICAL LOAD(KG)</b>	1088.4	917.4	782.2	721	556.3	450.4	430.7	398.2	360.5	323.5	278.1	259.7
<b>DEFLECTION(MM)</b>	4	11	17	28	37	48	60	72	83	95	108	119